



Essex County  
Fire & Rescue Service

# Making Essex safer together

## How we keep you safe in Essex

We're here for everyone who lives in, works in, or travels through Essex - protecting 1.88 million people across 1,400 square miles of towns, cities, countryside, and coastline.

From our 50 fire stations, our crews work every day to prevent emergencies, protect what matters most, and respond when you need us.

In the last year, we responded to 17,562 incidents, carried out 11,474 home safety visits, made 1,886 safeguarding referrals and our Control Team handled 44,146 calls.

**We're making Essex safer together - every day**



▼ Current live fire training centre



## Our Training Centre plan

We're proposing to build a new operational training centre at Service Headquarters to ensure our firefighters continue receiving the realistic, high-quality training they need to keep our communities safe.

The new centre will feature live fire simulation, fire investigation, and road traffic collision training - creating a realistic and comprehensive learning environment that supports every aspect of firefighter development.

Our current training site at Wethersfield, a former Ministry of Defence facility, will no longer be available to us. As a result, we must relocate and modernise our training provision to continue delivering the highest standards of emergency response across Essex.

## Our proposed site

### Kelvedon Park



Aerial image of Fire HQ



A12 Junction

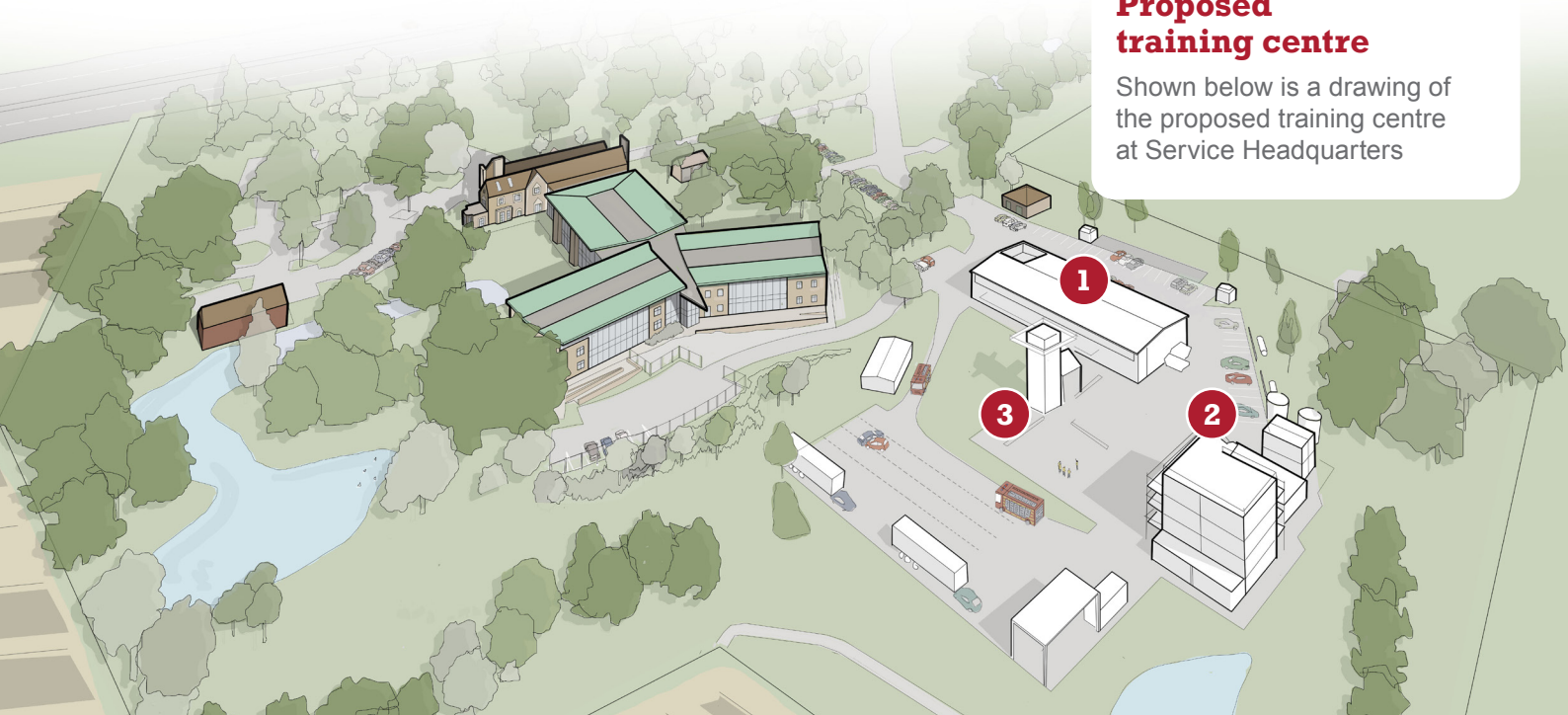




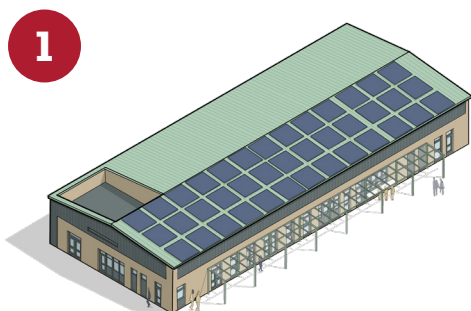
# Our proposed scheme

## Proposed training centre

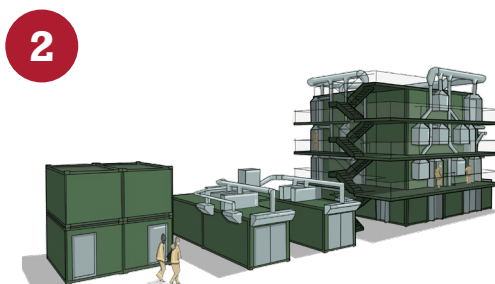
Shown below is a drawing of the proposed training centre at Service Headquarters



### ▼ New building types



⊕ **Ancillary Building**



⊕ **Fire Training Simulators**

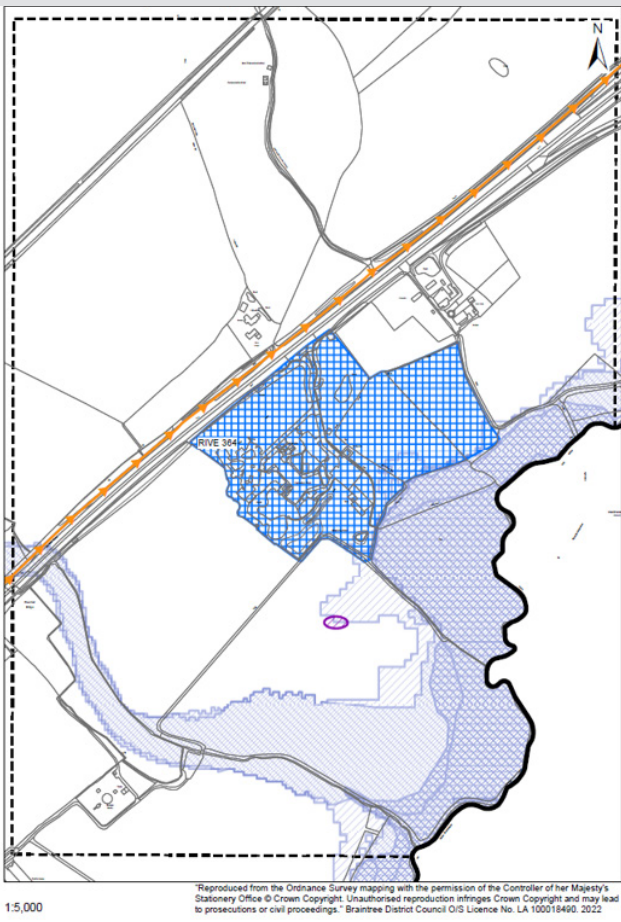


⊕ **Drill Tower**

### ▼ Artist's sketch of proposed training centre



# Planning Policy and Process



## Kelvedon Park (Rivenhall)

### Policy LPP 4

#### Kelvedon Park

Land at the Essex Fire & Rescue Service HQ, Kelvedon Park is allocated as a Special Employment Area specifically to meet the requirements of the emergency services for:

- a. Emergency Services facilities
- b. Training facilities
- c. Car Parking
- d. Vehicle maintenance facilities.

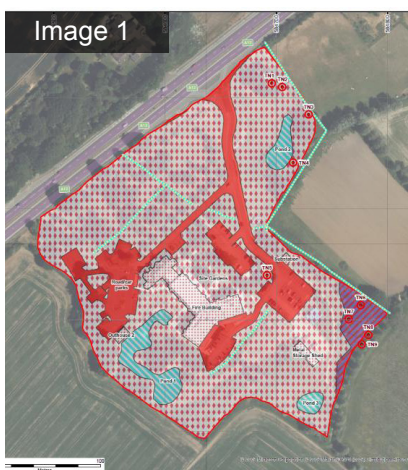
**An additional 3.3 hectares extension is allocated on the Proposals Map. Any further development is supported providing the following criteria are met:**

- Additional development on site must provide sufficient parking
- Appropriate boundary screening is required to the rear of the site
- Additional development must retain the parkland setting to the front of the site.

#### Key

- 2033 Cycleway
- Special Employment Area
- Flood Zone 2
- Flood Zone 3
- Scheduled monument

## Ecology and environmental responsibility



This is central to our training centre plans, with sustainability and biodiversity built into every stage of the design:

- Biodiversity Net Gain (BNG) means leaving nature in a better state than before—this project exceeds the government's 10% target by creating new habitats, planting trees and shrubs, and improving ponds to support wildlife.
- Water conservation systems will collect and reuse rainwater for training, helping reduce runoff and support sustainable water use.
- Eco-friendly design and landscaping will minimise visual impact, reduce noise, and enhance ecological diversity across the site.

**Image 1** - Aerial view of Service Headquarters

**Image 2** - Aerial view of 2km radius surrounding Service Headquarters in Kelvedon



#### Key

- Site Boundary
- h3 - dense scrub
- r1a - eutrophic standing water
- u1b5 - buildings
- u1d - suburban mosaic of developed/natural surfaces
- u1d - suburban mosaic of developed/natural surfaces
- u1e - built linear features (secondary code 111, 89)
- r1e - canal or ditch
- Target note
- 500m radius from Site Boundary
- Waterbody



# Landscaping



## Next Steps

- We're in early discussions with Braintree District Council and intend to submit a full planning application in the autumn.
- As part of this process, we'll be holding several pre-application meetings.
- Before then, we want to share our plans with nearby residents, answer any questions, and give you the opportunity to provide feedback on the proposed development.
- You'll be able to share your views through our public engagement process, and we're committed to listening and responding to your thoughts.
- A full business case will be submitted for consideration in December 2025.

Information will be available to view online at [www.essex-fire.gov.uk/training-centre](http://www.essex-fire.gov.uk/training-centre) from Wednesday 13 August where feedback forms will also be available.

